

Product Life Cycle Support Notice

Instron Bluehill® 2 Software to be Phase 4 – Discontinued Product in 2022

This is a formal notice to inform you that the **Instron Bluehill 2 software will enter Product Life Cycle Phase 4 – Discontinued Product on January 1, 2022**. ‘Discontinued Product’ is the final Product Life Cycle Phase with no support or further updates of any kind. The section below details the conditions which apply to a product in Phase 4.



Instron’s Product Life Cycle Policy is intended to help you plan the maintenance and ultimate evolution of your Instron test system. Notices are issued at life cycle milestones to inform you of pending changes and provide recommendations on how to move forward.

Bluehill Software Evolution

Instron’s Bluehill 2 software was released in 2006 and moved out of production and into Phase 2 in 2010 when Bluehill 3 was introduced. After 10+ years of limited support, Bluehill 2 will be discontinued. As you experienced, Instron equipment is built to last, and Bluehill 2 has become an integral tool for your lab’s productivity. However, the evolution of Windows® operating systems and other technology has put your testing capabilities at risk as Bluehill 2 is not compatible with versions of Windows that Microsoft currently supports. As your organization migrates to the latest version of Windows, please consider the necessary action to continue operating your Instron equipment.

Bluehill 2 Support in Product Life Cycle Phase 4

The following conditions apply to Bluehill 2 software in the “Discontinued Product” life cycle phase:

- No further software updates addressing critical or non-critical bugs
- No further additions of features or enhancements
- No support for newer PC hardware or operating systems
- No support for newer Instron hardware accessories
- Technical support assistance is unlikely to be available, but will be offered on a reasonable effort basis

Affected Instron Systems

- All Instron test frames running Bluehill 2 software
- All IPG Static Hydraulic, Torsion, or legacy EM test frames running Bluehill 2 software

The longer you delay a decision, the higher your laboratory is at risk for:

- Extended periods of downtime if operating system is not compatible with unsupported Instron software
- Missed business opportunities if Instron frame is inoperable
- Higher repair or replacement costs

Take action now to better position your laboratory:

- Ensure equipment software is supported and is compatible with the latest, most secure operating systems
- Increase operator productivity with user-friendly software
- Protect your competitive advantage for the long term



Upgrade and Replacement Recommendations

Why Migrate to the Latest Technology?

- Fully supported by tech support and engineering
- Improved accuracy and resolution
- Touch Display operation without use of a keyboard or mouse
- Full-function handset with most frequently used function keys
- Computer control, analysis, and test reports (*no chart paper or manual analysis*)
- Conforms to latest industry safety standards
- Meet compliance audit requirements with Bluehill Universal's Traceability module
- Support for strain measurement using extensometers and LVDTs, including the newest Instron video and automatic contacting extensometers
- High-Speed Data Acquisition (up to 5 kHz) - enables peak data to be detected more accurately in tests
- Enter and save important test and user information with new User Input Text and Numeric Fields
- Guided workflow offers operators start-to-finish navigation through the testing process
- Expanded results library meeting the latest ASTM, ISO, and DIN standards, including a user calculation creator
- Complete test display flexibility with user-defined test plot axes, zoom-in/out, and cursor selectable capability
- Webcam option for recording and replaying tests



What are your Options?

Bluehill® Universal Upgrade

Bluehill Universal is the latest generation materials testing platform designed from the ground-up for touch interaction and is fully compatible with the latest Windows operating system. All Bluehill 2 software users with Instron 3300, 5500, 5500A, 5900 test frames should consider upgrading to Bluehill Universal software. Existing test methods and test data can be easily converted in most circumstances. Bluehill 2 software users with other test frames should consult with their Instron representative for upgrade migration path recommendations.



Simpler. Smarter. Safer.

BLUEHILL UNIVERSAL



Bluehill Universal was built from the ground-up for touch interaction. The new portrait layout, with its meticulously crafted visual design, gives the most comprehensive view of the test workspace on the Operator Dashboard, a stunning large-format touch monitor with an integrated controller.

Bluehill Universal's large touchpoints and intuitive gestures make the user experience simpler and smarter. Easy-to-understand icons and workflows make it easy to train new or experienced users, simplifying operator training,



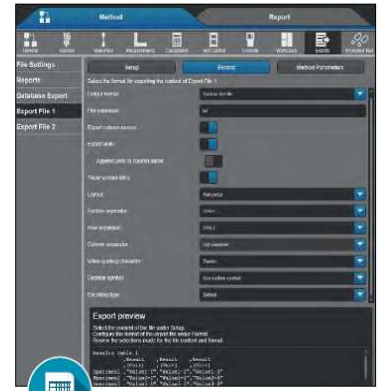
Traceability Module

The Traceability Module, Bluehill's compliance solution, seamlessly integrates electronic approvals, revision history, and an automated audit trail. This powerful add-on combines with built-in security to provide unmatched data traceability.



Expression Builder

Build your own user-defined functions using a list of variables from the method. Users can write functions for detecting test events, defining new calculations, making measurements, or setting domains for calculations.



Exporting Tools

Whether you need a polished PDF report, or a customized file to integrate with your lab information management system, Bluehill's exporting tools have the flexibility to output results, user inputs, raw data, graphs, and more in a wide variety of formats.



Effortless Workflows

An easy-to-use touch interface, built from the ground up with ergonomics in mind, optimizes your testing workflow.



Increased Efficiency

Console functions and numerical keypads are conveniently located and accessible, making your testing faster and easier.



Advanced Capability

Powerful Bluehill architecture gives you complete control over how you set up test methods, allowing you to achieve optimal results.

www.instron.com



Worldwide Headquarters
825 University Ave, Norwood, MA 02062-2643, USA
Tel: +1 800 564 8378 or +1 781 575 5000

European Headquarters
Coronation Road, High Wycombe, Bucks HP12 3SY, UK
Tel: +44 1494 464646